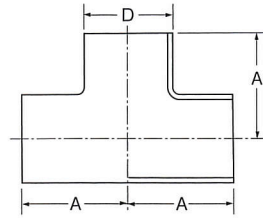
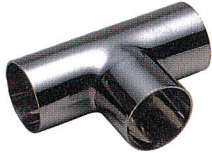


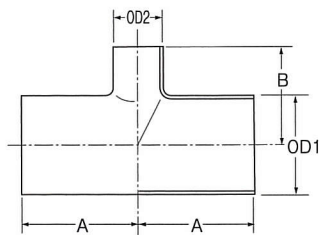
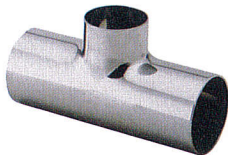
# 溶接継手

## ZTE-W チーズ



サイズ	D	A
1.0 <sup>S</sup>	25.4	34.0
1.25 <sup>S</sup>	31.8	38.0
1.5 <sup>S</sup>	38.1	49.0
2.0 <sup>S</sup>	50.8	61.0
2.5 <sup>S</sup>	63.5	84.0
3.0 <sup>S</sup>	76.3	89.0
3.5 <sup>S</sup>	89.1	103.5
4.0 <sup>S</sup>	101.6	133.4

## ZTER-W 異径チーズ



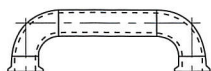
サイズ	OD1	OD2	A	B
1.5 <sup>S</sup> × 1.0 <sup>S</sup>	38.1	25.4	49.0	40.5
2.0 <sup>S</sup> × 1.0 <sup>S</sup>	50.8	25.4	61.0	48.5
2.0 <sup>S</sup> × 1.5 <sup>S</sup>	50.8	38.1	61.0	57.0
2.5 <sup>S</sup> × 1.0 <sup>S</sup>	63.5	25.4	84.0	54.5
2.5 <sup>S</sup> × 1.5 <sup>S</sup>	63.5	38.1	84.0	63.0
2.5 <sup>S</sup> × 2.0 <sup>S</sup>	63.5	50.8	84.0	67.0
3.0 <sup>S</sup> × 1.0 <sup>S</sup>	76.3	25.4	89.0	62.0
3.0 <sup>S</sup> × 1.5 <sup>S</sup>	76.3	38.1	89.0	70.5
3.0 <sup>S</sup> × 2.0 <sup>S</sup>	76.3	50.8	89.0	74.5
3.0 <sup>S</sup> × 2.5 <sup>S</sup>	76.3	63.5	89.0	91.5
4.0 <sup>S</sup> × 1.0 <sup>S</sup>	101.6	25.4	133.4	74.5
4.0 <sup>S</sup> × 1.5 <sup>S</sup>	101.6	38.1	133.4	83.0
4.0 <sup>S</sup> × 2.0 <sup>S</sup>	101.6	50.8	133.4	87.0
4.0 <sup>S</sup> × 2.5 <sup>S</sup>	101.6	63.5	133.4	104.0
4.0 <sup>S</sup> × 3.0 <sup>S</sup>	101.6	76.3	133.4	101.5

## エルボ角度指定

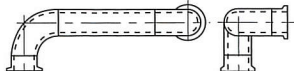
溶接する継手を両端ともにエルボ形状(L-M形状)を選択された場合の角度(方向)を指定します。

左側を基準として右側の角度を指定します。

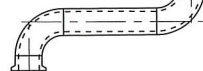
指定なし (左右とも同一方向)



90°



180°



270°

