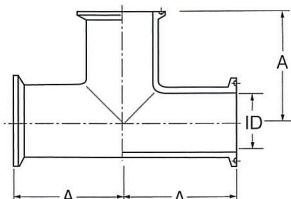
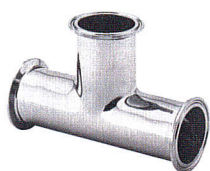


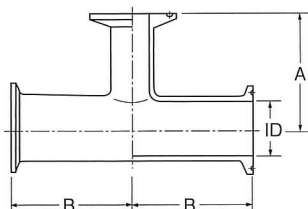
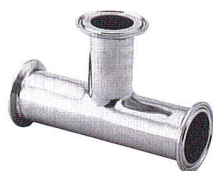
# ヘルール継手

## ZTE-F ヘルールチーズ



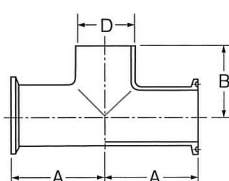
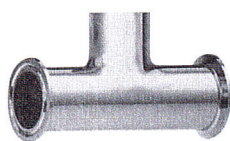
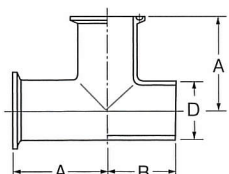
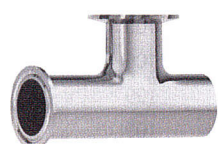
サイズ	ID	A
1.0 S	23.0	55.0
1.25 S	29.4	59.0
1.5 S	35.7	70.0
2.0 S	47.8	82.0
2.5 S	59.5	105.0
3.0 S	72.3	110.0
4.0 S	97.6	154.4

## ZTER-F ヘルール異径チーズ



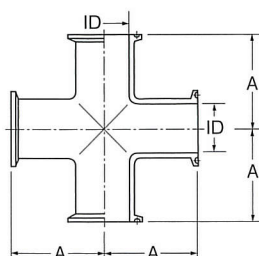
サイズ	ID	A	B	サイズ	ID	A	B
1.0 S × 8A	23.0	55.0	55	2.5 S × 2.0 S	59.5	88.0	105.0
1.0 S × 10A	23.0	55.0	55	2.5 S × 1.5 S	59.5	84.0	105.0
1.0 S × 15A	23.0	55.0	55	2.5 S × 1.0 S	59.5	75.5	105.0
1.5 S × 8A	35.7	55.0	70	3.0 S × 2.5 S	72.3	112.5	110.0
1.5 S × 10A	35.7	55.0	70	3.0 S × 2.0 S	72.3	95.5	110.0
1.5 S × 15A	35.7	55.0	70	3.0 S × 1.5 S	72.3	91.5	110.0
1.5 S × 1.0 S	35.7	61.5	70	4.0 S × 3.0 S	97.6	122.5	154.4
2.0 S × 1.5 S	47.8	78.0	82	4.0 S × 2.5 S	97.6	125.0	154.4
2.0 S × 1.0 S	47.8	69.5	82	4.0 S × 2.0 S	97.6	108.0	154.4

## ZTER-FWF/FFW ヘルール異径チーズ



サイズ	D	A	B
1.0 S	25.4	55.0	34.0
1.25 S	31.8	59.0	38.0
1.5 S	38.1	70.0	49.0
2.0 S	50.8	82.0	61.0
2.5 S	63.5	105.0	84.0
3.0 S	76.3	110.0	89.0
4.0 S	101.6	154.4	133.4

## ZXS-F ヘルールクロス



サイズ	ID	A
1.0 S	23.0	55.0
1.25 S	29.4	59.5
1.5 S	35.7	70.0
2.0 S	47.8	82.0
2.5 S	59.5	105.0
3.0 S	72.3	110.0
4.0 S	97.6	154.4