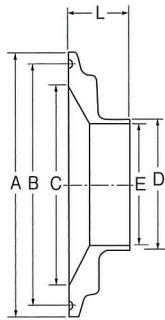


# 溶接ヘルール継手

## ZSF-RA 異径ヘルール



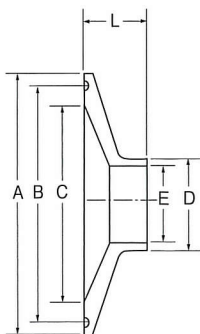
サイズ	A	B	C	D	E	L	
2.0 <sup>S</sup> × 1.5 <sup>S</sup>	64.0	56.5	47.8	38.1	35.7	21	
2.5 <sup>S</sup> × 1.5 <sup>S</sup>	77.5	70.5	59.5	38.1	35.7	21	
2.5 <sup>S</sup> × 2.0 <sup>S</sup>	77.5	70.5	59.5	50.8	47.8	21	
3.0 <sup>S</sup> × 1.0 <sup>S</sup>	91.0	83.5	72.3	25.4	23.0	21	
3.0 <sup>S</sup> × 1.5 <sup>S</sup>	91.0	83.5	72.3	38.1	35.7	21	
3.0 <sup>S</sup> × 2.0 <sup>S</sup>	91.0	83.5	72.3	50.8	47.8	21	
3.0 <sup>S</sup> × 2.5 <sup>S</sup>	91.0	83.5	72.3	63.5	59.5	21	

## ZSF-RBタイプ

サイズ	A	B	C	D	E	L	
1.5 <sup>S</sup> × 1.0 <sup>S</sup>	50.5	43.5	35.7	25.4	23.0	21	
2.0 <sup>S</sup> × 1.0 <sup>S</sup>	64.0	56.5	47.8	25.4	23.0	21	
2.5 <sup>S</sup> × 1.0 <sup>S</sup>	77.5	70.5	59.5	25.4	23.0	21	

## ZSF-RB 異径ヘルール

(ガス管用)



サイズ	A	B	C	D	E	L	
1.0 <sup>S</sup> × 8A	50.5	43.5	23.0	13.8	10.5	21	
1.0 <sup>S</sup> × 10A	50.5	43.5	23.0	17.3	14.0	21	
1.0 <sup>S</sup> × 15A	50.5	43.5	23.0	21.7	17.5	21	
1.5 <sup>S</sup> × 8A	50.5	43.5	35.7	13.8	10.5	21	
1.5 <sup>S</sup> × 10A	50.5	43.5	35.7	17.3	14.0	21	
1.5 <sup>S</sup> × 15A	50.5	43.5	35.5	21.7	17.5	21	
1.5 <sup>S</sup> × 20A	50.5	43.5	35.5	27.2	23.0	21	
1.5 <sup>S</sup> × 25A	50.5	43.5	35.5	34.0	28.4	21	
2.0 <sup>S</sup> × 15A	64.0	56.5	47.8	21.7	17.5	21	
2.0 <sup>S</sup> × 20A	64.0	56.5	47.8	27.2	23.0	21	
2.0 <sup>S</sup> × 25A	64.0	56.5	47.8	34.0	28.4	21	
2.0 <sup>S</sup> × 40A	64.0	56.5	47.8	48.6	43.0	21	
2.5 <sup>S</sup> × 15A	77.5	70.5	59.5	21.7	17.5	21	
2.5 <sup>S</sup> × 20A	77.5	70.5	59.5	27.2	23.0	21	
2.5 <sup>S</sup> × 25A	77.5	70.5	59.5	34.0	28.4	21	
2.5 <sup>S</sup> × 40A	77.5	70.5	59.5	48.6	43.0	21	
2.5 <sup>S</sup> × 50A	77.5	70.5	59.5	60.5	54.9	21	