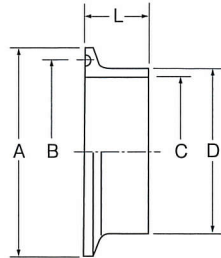


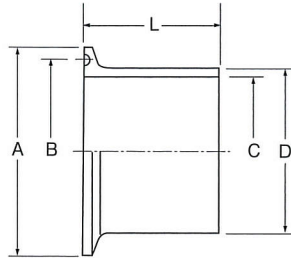
# 溶接ヘルール継手

## ZFS 溶接ヘルール



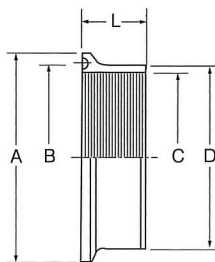
サイズ	D	A	B	C	L
1.0 <sup>S</sup>	25.4	50.5	43.5	23.0	21
1.25 <sup>S</sup>	31.8	50.5	43.5	29.4	21
1.5 <sup>S</sup>	38.1	50.5	43.5	35.7	21
2.0 <sup>S</sup>	50.8	64.0	56.5	47.8	21
2.5 <sup>S</sup>	63.5	77.5	70.5	59.5	21
3.0 <sup>S</sup>	76.3	91.0	83.5	72.3	21
3.5 <sup>S</sup>	89.1	106.0	97.0	85.1	21
4.0 <sup>S</sup>	101.6	119.0	110.0	97.6	21

## ZFL ロングヘルール



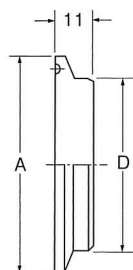
サイズ	D	A	B	C	L
1.0 <sup>S</sup>	25.4	50.5	43.5	23.0	42
1.25 <sup>S</sup>	31.8	50.5	43.5	29.4	42
1.5 <sup>S</sup>	38.1	50.5	43.5	35.7	42
2.0 <sup>S</sup>	50.8	64.0	56.5	47.8	42
2.5 <sup>S</sup>	63.5	77.5	70.5	59.5	42
3.0 <sup>S</sup>	76.3	91.0	83.5	72.3	42
3.5 <sup>S</sup>	89.1	106.0	97.0	85.1	42
4.0 <sup>S</sup>	101.6	119.0	110.0	97.6	42

## ZFS-E エキスパンドヘルール



サイズ	D	A	B	C	L
1.0 <sup>S</sup>	29.5	50.5	43.5	25.6	20
1.25 <sup>S</sup>	36.0	50.5	43.5	32.0	20
1.5 <sup>S</sup>	42.5	50.5	43.5	38.3	20
2.0 <sup>S</sup>	56.0	64.0	56.5	51.0	20
2.5 <sup>S</sup>	69.0	77.5	70.5	63.7	25
3.0 <sup>S</sup>	82.0	91.0	83.5	76.5	30

## ZFB ブラインドヘルール



サイズ	D	A	
1.5 <sup>S</sup>	38.1	50.5	
2.0 <sup>S</sup>	50.8	64.0	
2.5 <sup>S</sup>	63.5	77.5	
3.0 <sup>S</sup>	76.3	91.0	
3.5 <sup>S</sup>	89.1	106.0	
4.0 <sup>S</sup>	101.6	119.0	